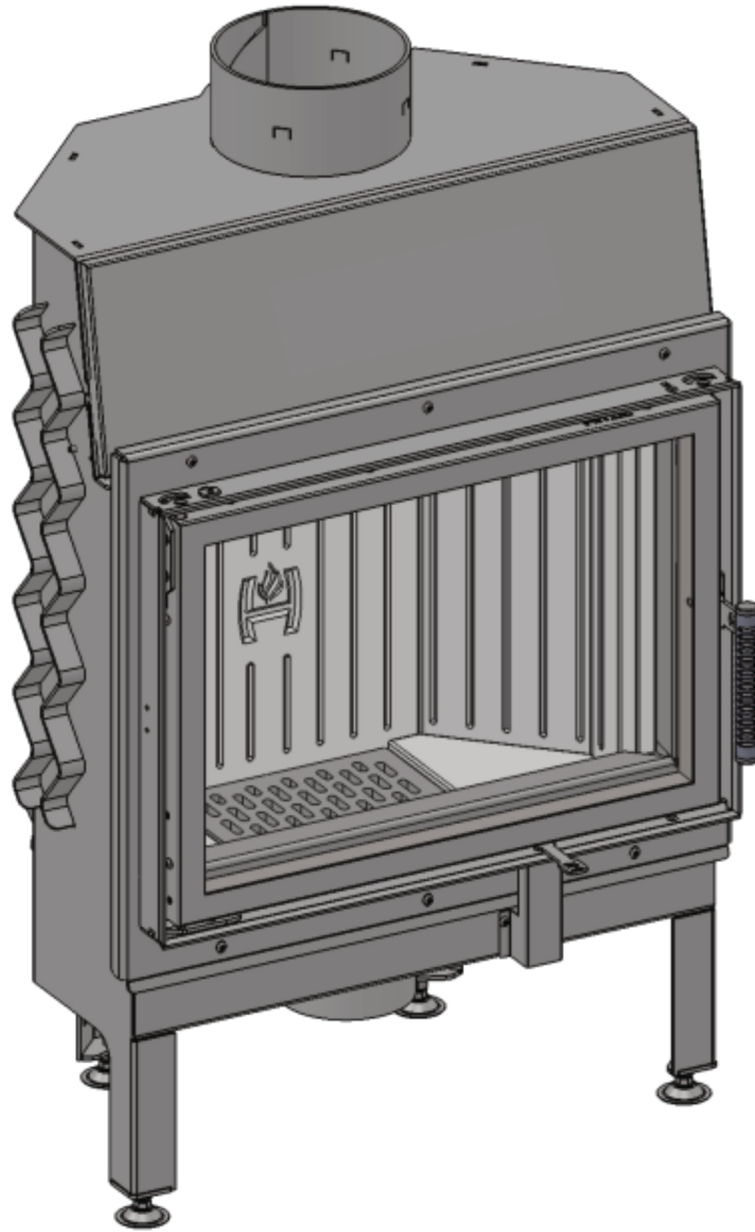


Hestia 1000 Guillotine

BASIC INSTALL SHEET



Version 2 03/07/24

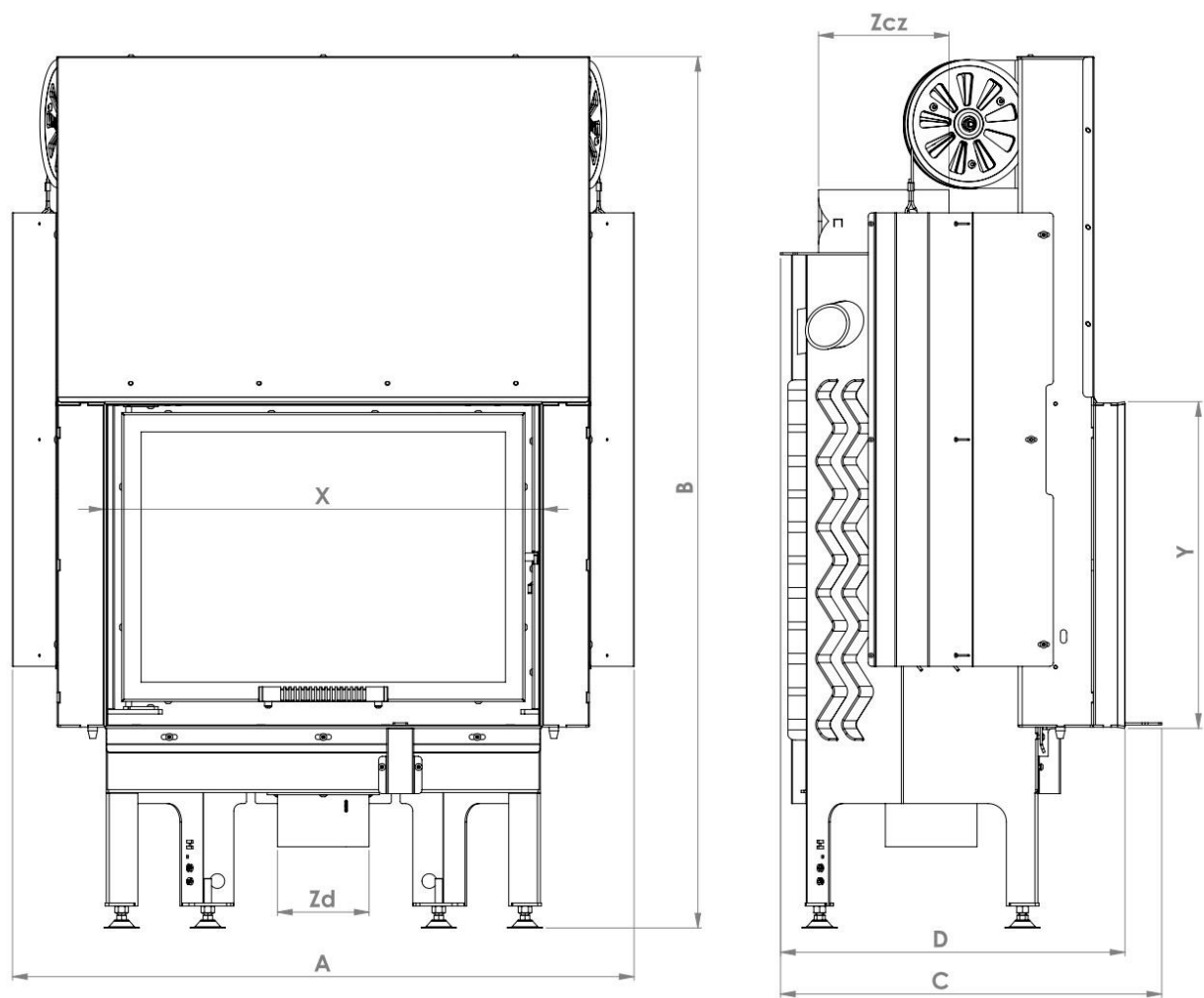
Contents of manual may be updated without notice.

For the latest version of this manual please refer
to our website: www.livingfire.com.au

PAUL AGNEW | **DESIGNS**

Hestia 1000 GUILLOTINE

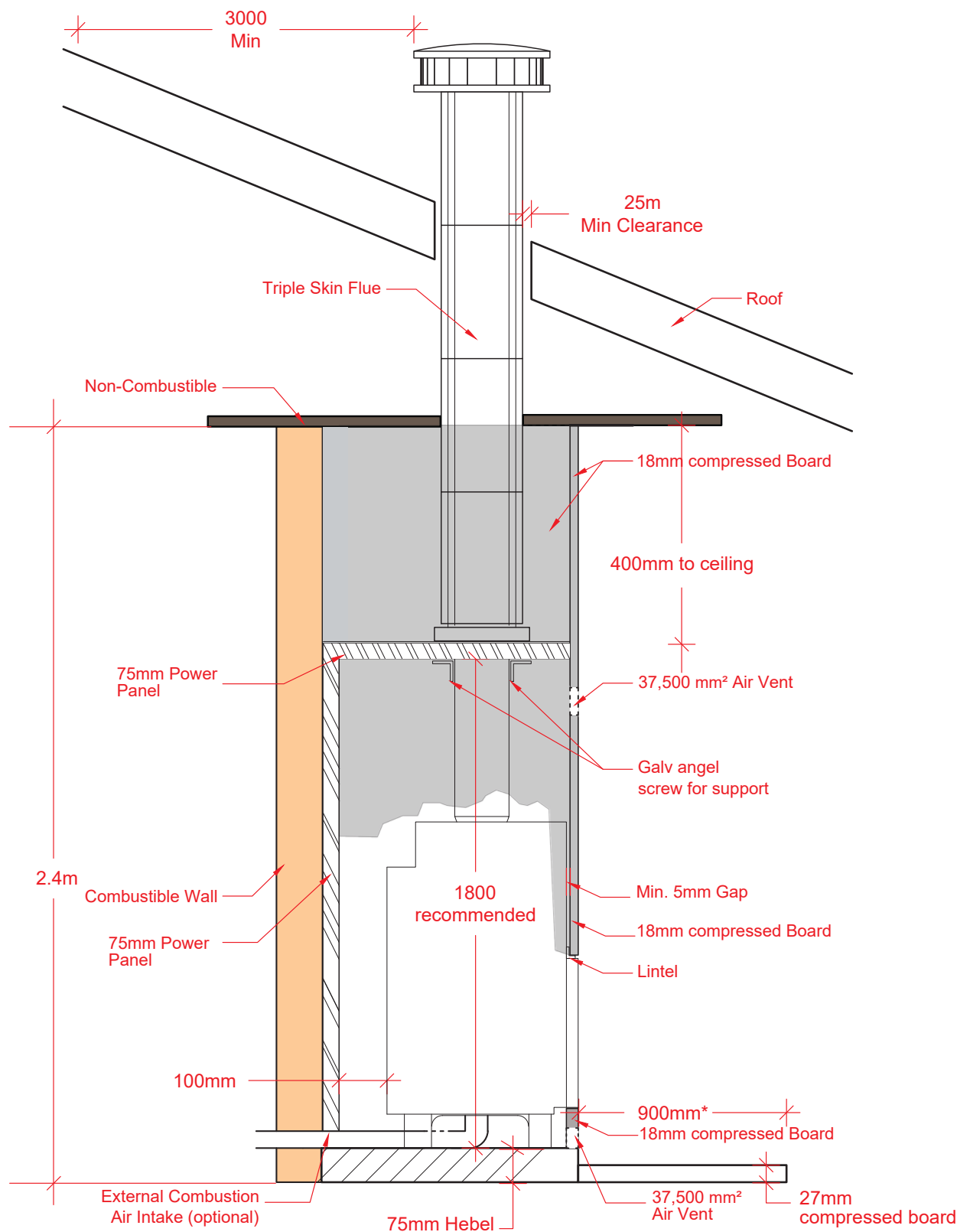
FIREBOX DIMENSIONS



Dimensions [mm]	HESTIA 1000 Guillotine Glass Fronted
A	983
B	1431
C	575
D	525
X	733
Y	587
Zcz	198
Zd	125

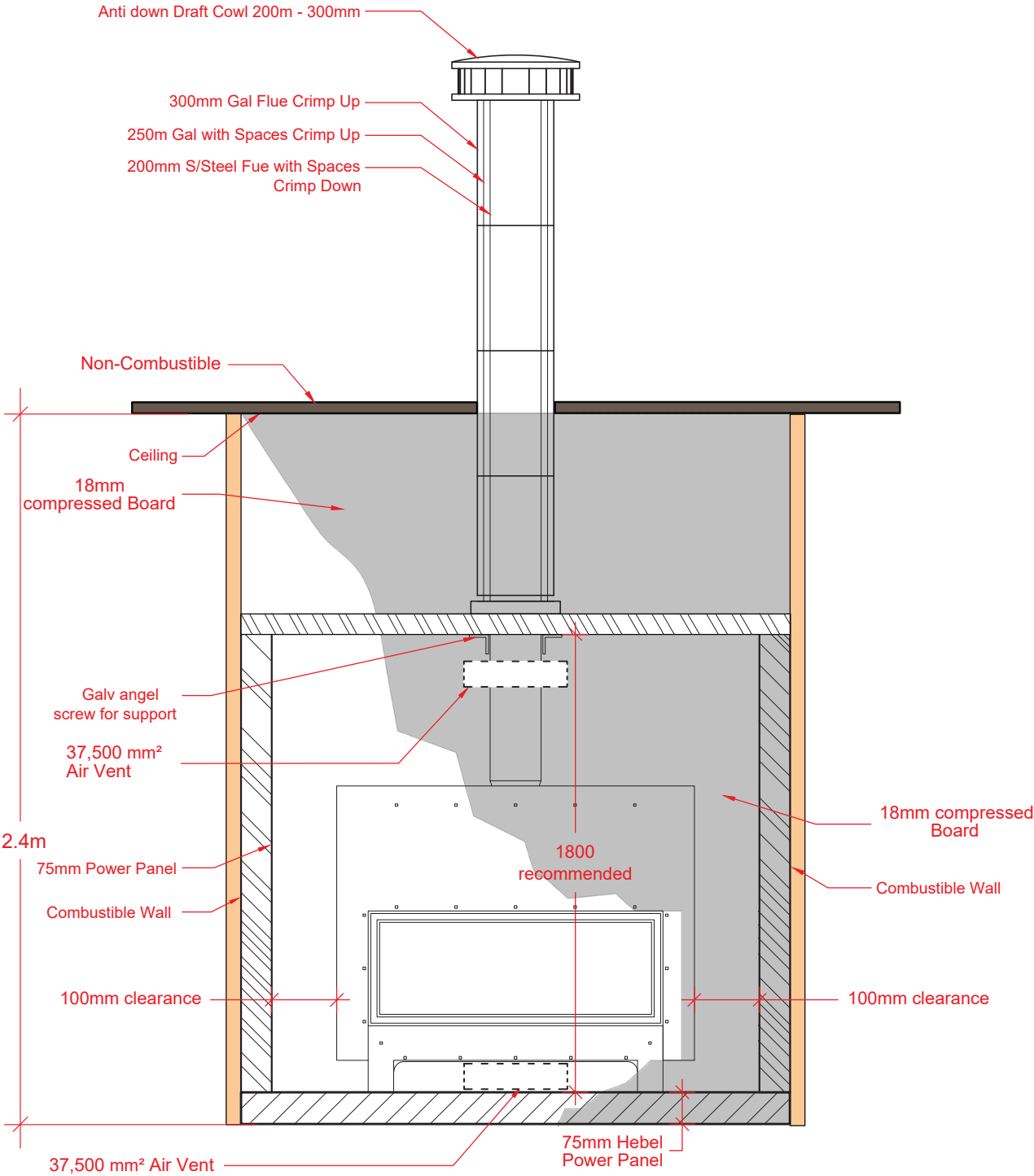
Hestia 1000 GUILLOTINE

HEBEL ENCLOSURE



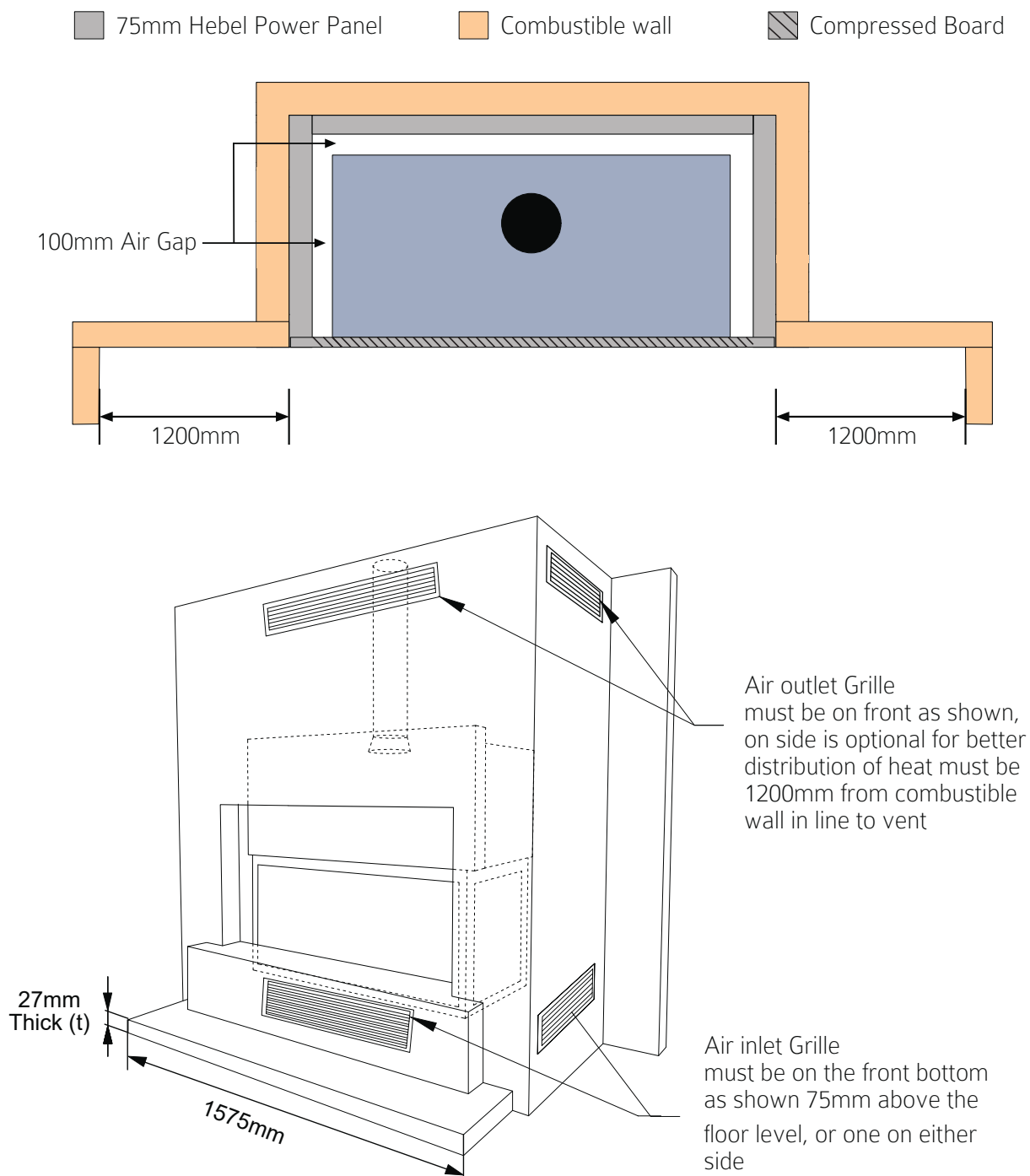
Hestia 1000 GUILLOTINE

HEBEL ENCLOSURE



Hestia 1000 GUILLOTINE

Clearance Diagram



Notes:

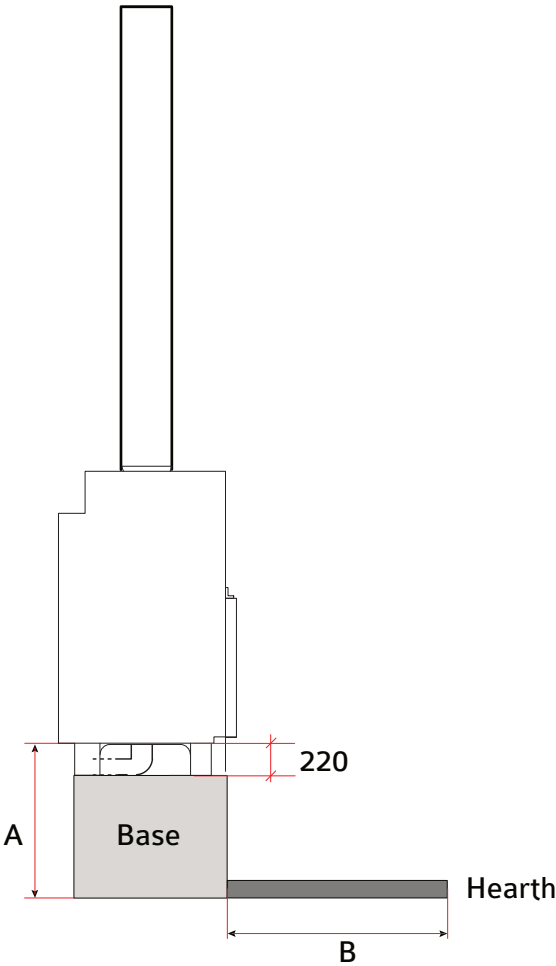
1. Air outlet grilles minimum air flow area required = 375cm².
2. Air inlet grilles minimum air flow area = 375cm².
3. All dimensions in millimeters.
4. Do not scale from these diagrams.
5. Air transfer kits mandatory for exempt units to comply to AS/NZ 4012/4013:2014. Fan optional depending on duct length.

IMPORTANT: NO BRICKWORK TO BE COMMENCED UNTIL FIREBOX IS PLACED IN POSITION

Hestia 1000 GUILLOTINE

Hearth Clearance information

Please refer to the table below for the reference to your hearth. The 'A' measurements references the height of the unit off the floor and the 'B' measurement references the forefront of the hearth from the glass of the heater.



A	B
295 (minimum)	900
400	859
500	800
600	730
700	640
800	500
900	295 (minimum)